



Hawkswell Drive | Willenhall | WV13 3EJ

£240,000

 **Webbs**  
estate agents



## Summary

**\*\*THREE BEDROOM SEMI DETACHED HOME\*\*DRIVEWAY AND GARAGE\*\* TILED FLOORING THROUGH THE HALL LOUNGE AND KITCHEN\*\* REFITTED KITCHEN\*\*REFITTED BATHROOM\*\*EXTENDED TO THE SIDE\*\* LANDSCAPED REAR GARDEN\*\* POPULAR LOCATION\*\* VIEWING IS ESSENTIAL\*\***

Webbs Estate Agents are pleased to bring to market this much improved three bedroom semi detached home, close to all local amenities being close to shops, schools, road and transport links.

This home in brief offers, entrance hall, lounge, refitted kitchen, dining/ study room and garage.

On the first floor there are three generous bedrooms and refitted bathroom.

To the front of this home there is a block paved driveway and garage. To the rear there is a private and enclosed landscaped rear garden comprising of a paved patio area and artificial lawn.

Call Webbs on 01922 663399 to secure your viewing today!!!

## Key Features

- EXTENDED THREE BEDROOM SEMI DETACHED HOME
- REFITTED KITCHEN AND BATHROOM
- LANDSCAPED REAR GARDEN
- STUDY/DINING AREA
- CLOSE TO ALL LOCAL AMENITIES
- DRIVEWAY AND GARAGE
- FINISHED TO A HIGH STANDARD THROUGHOUT
- TWO RECEPTION ROOMS
- POPULAR LOCATION
- CALL WEBBS ON 01922 663399 TO SECURE YOUR VIEWING TODAY!!!

## Rooms and Dimensions

### Entrance Hall

### Lounge

13'8" x 9'11" (4.178m x 3.030m)

### Dining Area/ Study

7'2" x 7'3" (2.201m x 2.223m)

### Kitchen Diner

13'2" x 8'4" (4.014m x 2.551m)

### Garage

15'5" x 7'4" (4.705m x 2.244m)

### First Floor

### Bedroom One

7'4" x 18'6" (2.250m x 5.648m)

### Bedroom Two

9'0" x 7'0" (2.764m x 2.147m)

### Bedroom Three

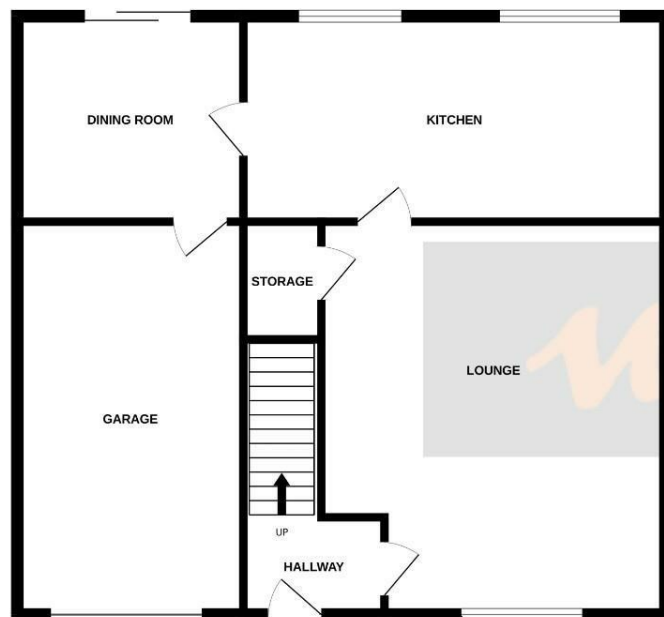
13'3" x 12'5" (4.040m x 3.788m)

### Bathroom





GROUND FLOOR

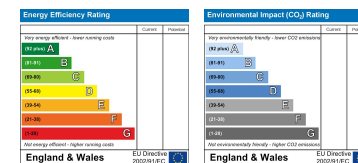


1ST FLOOR



Whilst every attempt has been made to ensure the accuracy of the floorplan contained here, measurements of doors, windows, rooms and any other items are approximate and no responsibility is taken for any error, omission or mis-statement. This plan is for illustrative purposes only and should be used as such by any prospective purchaser. The services, systems and appliances shown have not been tested and no guarantee as to their operability or efficiency can be given.  
Made with Metropix ©2024

Webbs Estate Agents - endeavour to maintain accurate depictions of properties in Virtual Tours, Floor Plans and descriptions, however, these are intended only as a guide and purchasers must satisfy themselves by personal inspection.



28 High Street, Aldridge, Walsall, WS9 8LZ

Tel: 01922 288800 | Email: [aldridge@webbestateagents.co.uk](mailto:aldridge@webbestateagents.co.uk) | [www.webbestateagents.co.uk](http://www.webbestateagents.co.uk)

